

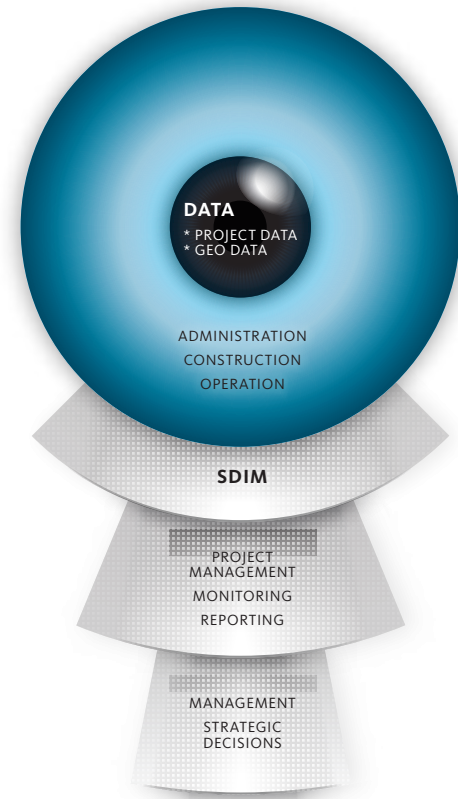
# What is S.D.I.M?

A **geographic information system (GIS)** that integrates hardware, software, and data for capturing, managing, analyzing, and displaying all forms of geographically referenced information. Geography plays a role in nearly every decision we make. Choosing sites, targeting market segments, planning distribution networks, responding to emergencies, or redrawing boundaries.

**GIS** allows us to view, understand, query, question, interpret, and visualize data in the form of maps, globes, reports, and charts.

A **GIS** helps you answer questions and solve problems by looking at your data in a way that is quickly understood and easily shared.

**GIS** technology can be integrated into any enterprise information system framework.



S.D.I.M Eye

## THREE VIEWS OF A GIS

### 1 | THE DATABASE VIEW:

A GIS is a unique kind of database of the world's geographic database (Geodatabase). It is an "Information System for Geography." Fundamentally, a GIS is based on a structured database that describes the world in geographic terms"

### 2 | THE MAP VIEW:

A GIS is a set of intelligent maps and other views that show features and feature relationships on the earth's surface. Maps of the underlying geographic information can be constructed and used as "windows into the database" to support queries, analysis, and editing of the information.

### 3 | THE MODEL VIEW:

A GIS is a set of information transformation tools that derive new geographic datasets from existing datasets. These geo processing functions take information from existing data sets, apply analytic functions, and write results into new derived datasets. All these datasets should be stored in a database. Together, these three views are critical parts of an intelligent GIS and are used at varying levels in all GIS applications.

### Why Use GIS?

Organizing a Major Event requires many location-based processes and data is stored in a variety of formats in many locations. These data have to be integrated so that they can be analyzed as a whole to make critical planning decisions.

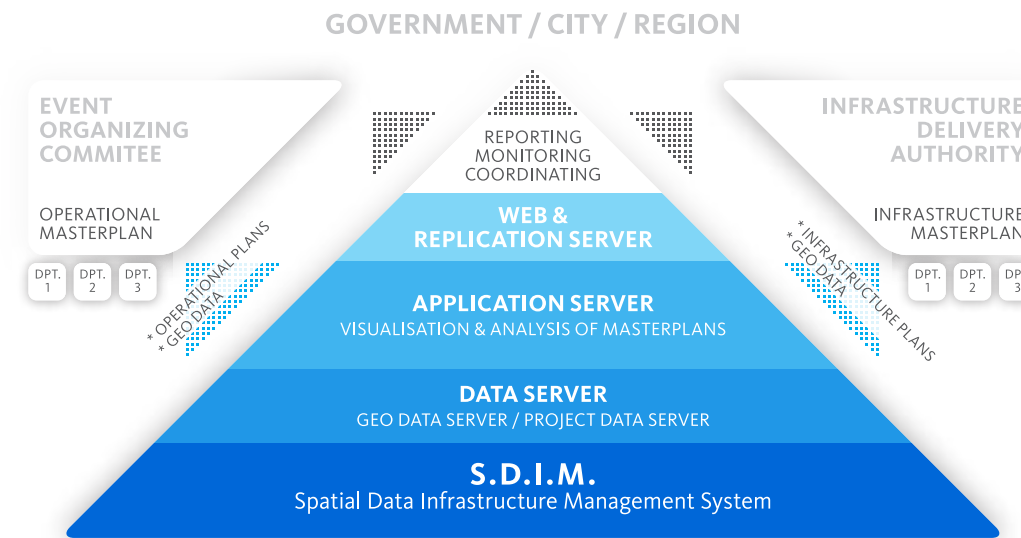
**GIS** can integrate and relate any data with spatial components, regardless of the source of the data. The functionality of a **GIS** enables to create a "virtual geographic world" and to run simulations for many different thematic questions and regions. In combination with non-geographic applications and calculation programs this can save tremendous time and money.

# Philosophy

Masterconcept offers userfriendly Geo Data based Planning- and Management solutions for Major Sports Events.

We process, collect and manage multi-stakeholder projects of large scale and streamline all procedures resulting in maximum efficiency.

Customized maps, web based project solutions and a well managed project data base as the key to your success.



S.D.I.M Pyramid

# Partners & Clients

**SMC Ltd**  
www.smc-ltd.eu

**ROS Engineering**  
www.roing.ru

**Roza Khutor LLC**  
www.rozaski.com

**University of Technology Vienna**  
Institute for Transport Planning and Traffic Engineering  
www.tu-wien.ac.at

**Austrian Railway Corporation**  
Engineering Services  
www.oebb.at/bau

**bcn eventfactory**  
www.bcneventfactory.com

**Doppelmayr AG**  
www.doppelmayr.at

**MS GIS**  
www.msgis.com

**Sochi 2014 Organizing Committee**  
www.sochi2014.com

**SynerGIS / ESRI distributor**  
www.synergis.at

**TechnoProm**  
www.ik-technoprom.ru

**Federal Ministry of Agriculture, Forestry, Environment and Water Management**  
www.lebensministerium.at

**Russian Railways**  
www.rzd.ru

**Transport Directorate of Olympic Games 2014**  
www.tdog2014.com

**peak 5642**  
www.peak5642-davos.com

**Skiresort Gaisau-Hintersee**  
www.gaisauhintersee.at

**BSF Swissphoto**  
www.bsf-swissphoto.com

**Basel Aero LLC**  
www.basel.ru/en/structure/avia/aero

www.masterconcept.at  
Salzburg / Vienna / Moscow

www.masterconcept.at  
Salzburg / Vienna / Moscow

# MASTER PLANNING AND CONSULTING

International multi-disciplinary Master Planning and Professional Consulting with special focus on Geographic Data based solutions.



# Contact

**Masterconcept Consulting Ltd**  
Ganshofstr. 18a / 5020 Salzburg / Austria

**Main Office:**  
Straubingerstrasse 12 / 5020 Salzburg / Austria

**GIS / SDIM Office**  
Mariahilferstrasse 119-1, Top 17 / 1060 Wien / Austria

m: +43 662 82 45 98 / f: +43 662 83 13 69  
office@masterconcept.at / www.masterconcept.at



## Infrastructure Management

- \* Road and Rail Infrastructures
- \* Objects and Buildings
- \* Utilities

- \* Environmental Management
- \* Mountain Master Planning, Slope Planning and Avalanche Zoning

- \* Digital Cadastre
- \* Urban Master Planning and Management



## Major Event Solutions

- \* Major Event Venue Cluster Planning in urban context
- \* Venue Master Planning in combination with environmentally sensitive zones

- \* GIS based City Sports Infrastructure Management (Football stadium, Hockey Stadium Cluster)
- \* Event operational Planning

- \* Transport Plans
- \* Mapping



## GIS

### GEOGRAPHIC INFORMATION SYSTEM

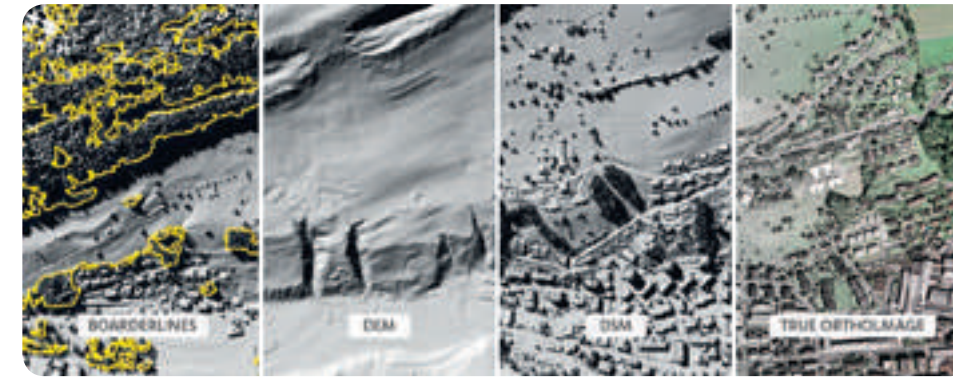
#### GIS BASED SERVICES FOR INTEGRATED INFRASTRUCTURE DEVELOPMENT

Masterconcept provides specialized consultancy services and solutions for the integrated planning, maintenance and management of major infrastructure projects.

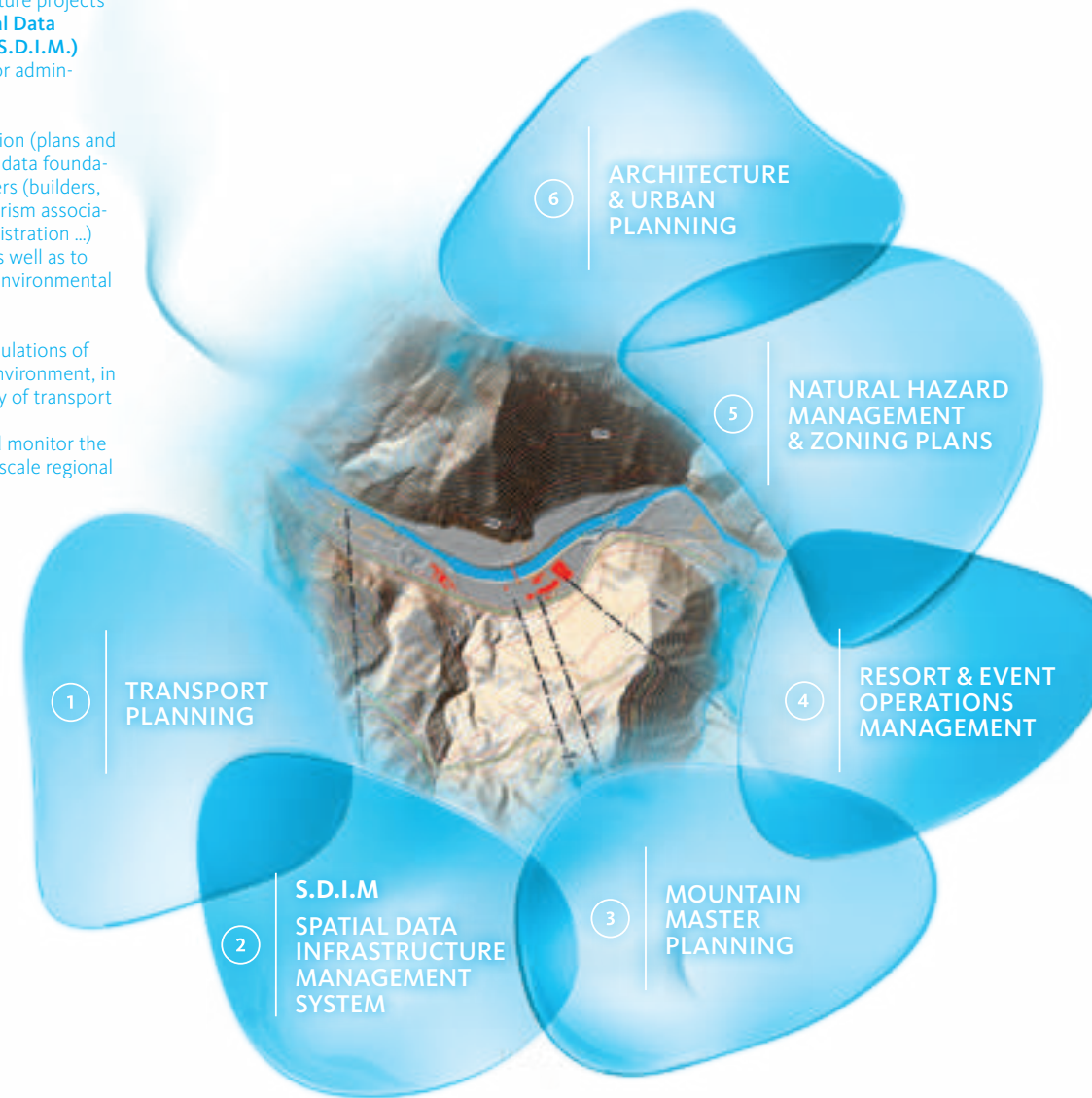
We tailor tools and software solutions to specific client requirements in **Geographic Information Systems (GIS)**; combining all infrastructure projects into a geo-referenced database – **Spatial Data Infrastructure Management System (S.D.I.M.)** with environmental, demographic and/or administrative data.

The resulting custom thematic information (plans and maps) referencing the same geographic data foundation can be used by different stakeholders (builders, infrastructure planners & operators, tourism associations, emergency services, public administration ...) to model simulations and calculations as well as to evaluate land owner management and environmental zoning criteria.

Masterconcept also conducts traffic simulations of multi-modal passenger flows in a **GIS** environment, in order to review the design and feasibility of transport infrastructure. **S.D.I.M.** allows us to easily manage and monitor the ongoing development of complex large scale regional projects.



Layer based structures of Geodata



## Services

#### GIS:

- \* Data Capturing and Management
- \* Data Integration
- \* Data Analysis
- \* Application Development

#### WEB GIS Solutions:

- \* Customized Web GIS
- \* Hosting and Maintenance
- \* Training and Web based location independent Management

#### Project Management:

- \* Stakeholder Coordination
- \* Standards and Quality controlling

## S.D.I.M.

### SPATIAL DATA BASED INFRASTRUCTURE & MANAGEMENT SYSTEM

planning, viewing, controlling and monitoring tool based on Geographical Data & Project Data to be used by all stakeholders and responsible entities (Organizing Committees & Infrastructure Delivery Authorities)

#### BENEFITS OF THE S.D.I.M.

- \* Common database for all stakeholders (Operations, infrastructure, legal, finance, ...)
- \* Common project management, monitoring and controlling tool
- \* Visualization of project progress for all stakeholders
- \* Basis for strategic decisions (venues, environment, properties, transport,...)
- \* Long term benefits for the Olympic / Event region (management, environment, tourism, public maintenance)
- \* Transparency of project circumstances (geology, nature risks, local requirements)
- \* Special tools for security, emergency and health care planning
- \* Detailed overview on master plan, budget and timelines
- \* E-learning for OC staff, volunteers and other stakeholder

#### BENEFICIARIES OF S.D.I.M.

- \* Architects & Engineers (CAD)
- \* Operational plans
- \* Security plans
- \* Budget plans
- \* Transport models and spectator flow simulations
- \* Accommodation data and integration into transport models
- \* Land owner agreements and cadastre legal issues
- \* Facility Management
- \* Geographical Data Management (GDM)
- \* Raw material and labour force procurement (transport & logistics support)